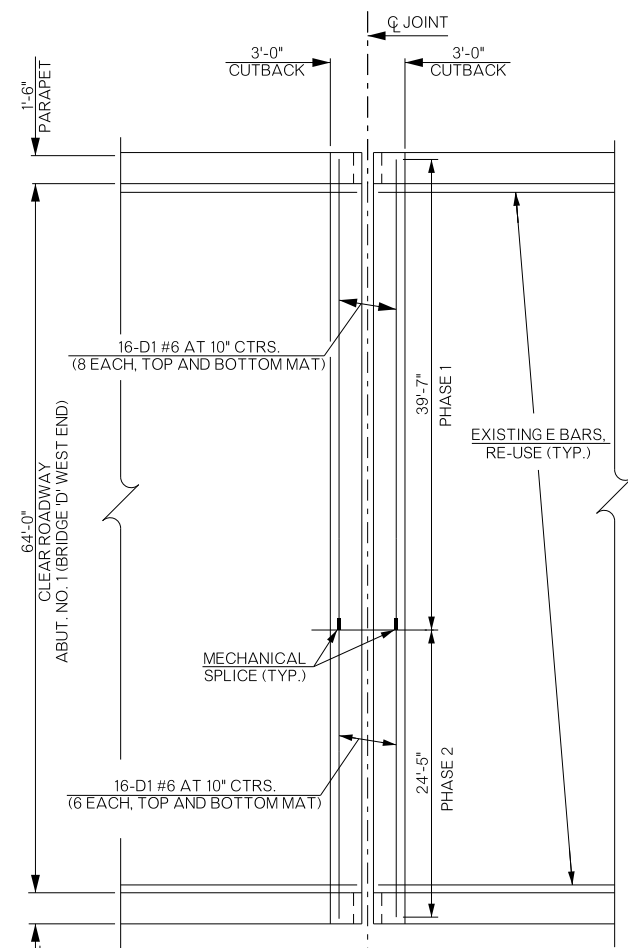
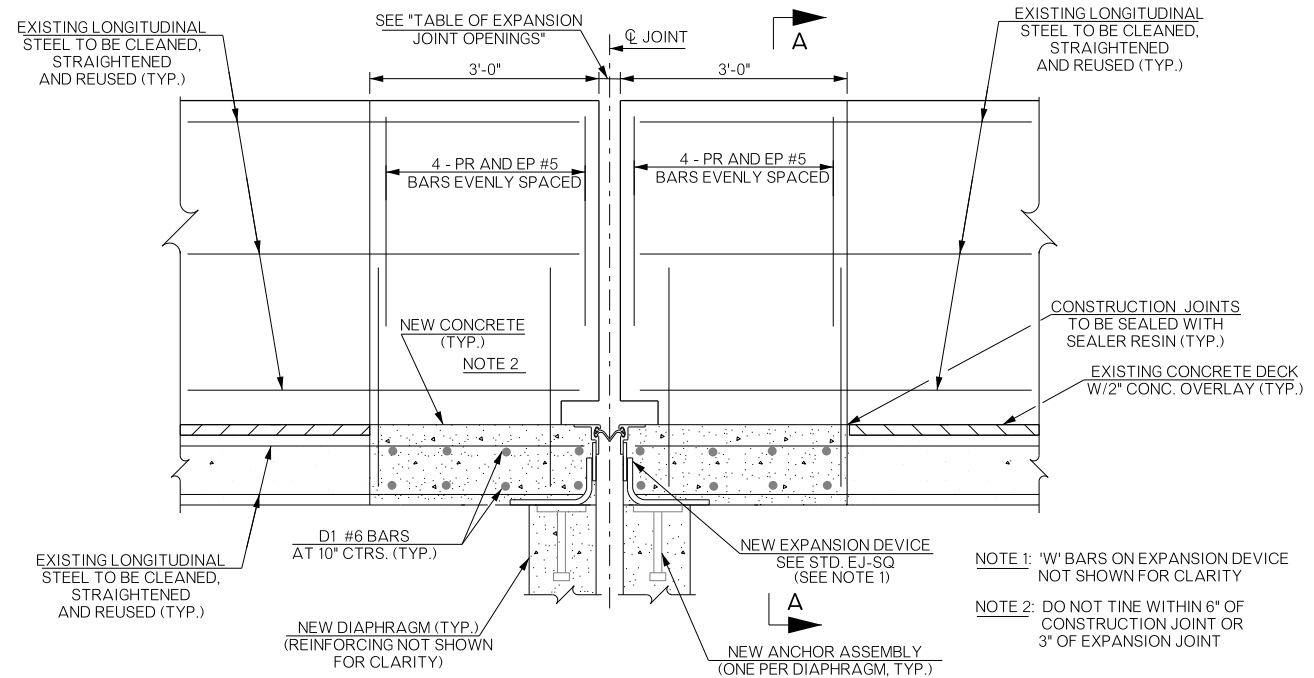


REVISIONS		
REV. NO.	DESCRIPTION	DATE



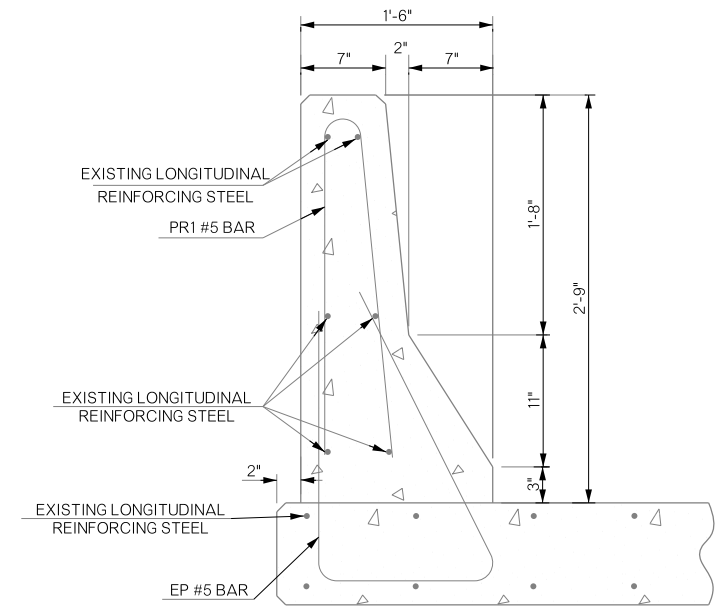
REHAB. EXP. JOINT PLAN VIEW (TYP.)

NOTE: DIMENSIONS SHOWN ARE FOR ABUT. NO. 1, BRIDGE 'D'. SEE SHEET 'DETAILS OF REPAIR (BRIDGE C & D)' FOR OTHER LOCATIONS



TYPICAL SECTION OF REHABILITATED EXPANSION JOINT

NOTE 1: 'W' BARS ON EXPANSION DEVICE NOT SHOWN FOR CLARITY
 NOTE 2: DO NOT TIE WITHIN 6" OF CONSTRUCTION JOINT OR 3" OF EXPANSION JOINT

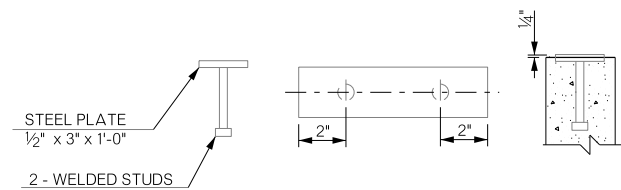


SECTION A-A

(ALL PARPET LOCATIONS EXCEPT FOR PIER 20)

EXPANSION JOINT OPENING SETTINGS BRIDGE 'C' & 'D'

EXP. PIERS / ABUT.	
TEMP. (°F)	OPENING
103	5/8"
90	1"
82	1 1/4"
73	1 1/2"
60	1 7/8"
52	2 1/8"
43	2 3/8"
30	2 3/4"
22	3"
13	3 1/4"
5	3 1/2"



DETAIL OF ANCHOR ASSEMBLY

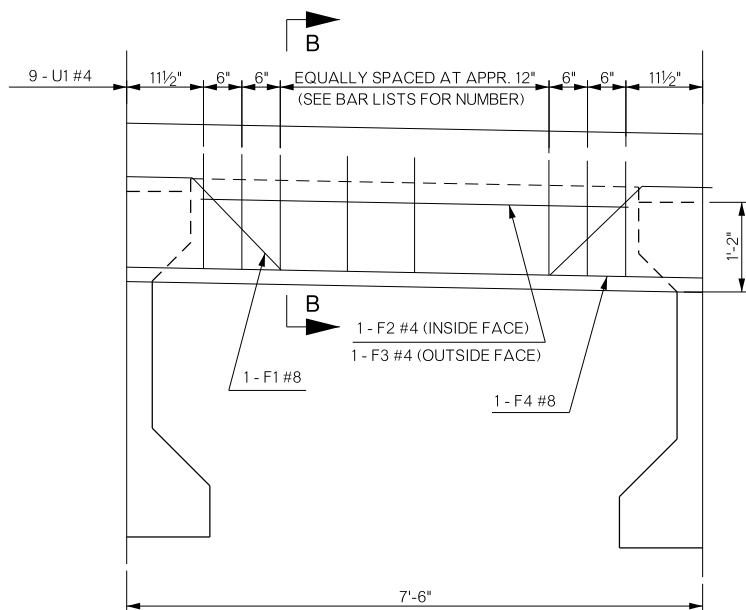
BAR LIST (BRIDGE 'D', ABUT. NO. 1) EPOXY COATED

MARK	NO.	SIZE	FORM	LENGTH
(A) D1	16	#6	STR.	40'-9"
(B) D2	16	#6	STR.	25'-7"
(A) EP	8	#5	BNT.	5'-5"
(B) EP	8	#5	BNT.	5'-5"
(A) F1	8	#8	BNT.	8'-8"
(B) F1	6	#8	BNT.	8'-8"
(A) F2	8	#4	STR.	5'-6"
(B) F2	6	#4	STR.	5'-6"
(A) F3	1	#4	STR.	26'-11"
(B) F3	1	#4	STR.	26'-11"
(A) F4	1	#8	STR.	26'-7"
(B) F4	1	#8	STR.	26'-7"
(A) PR	6	#5	BNT.	5'-0"
(B) PR	6	#5	BNT.	5'-0"
(A) U1	64	#4	BNT.	3'-3"
(B) U1	62	#4	BNT.	3'-3"

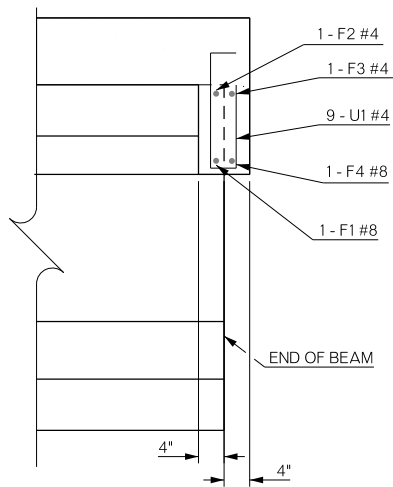
(A) PHASE 1
(B) PHASE 2

QUANTITIES (BRIDGE 'D', ABUT. NO. 1)

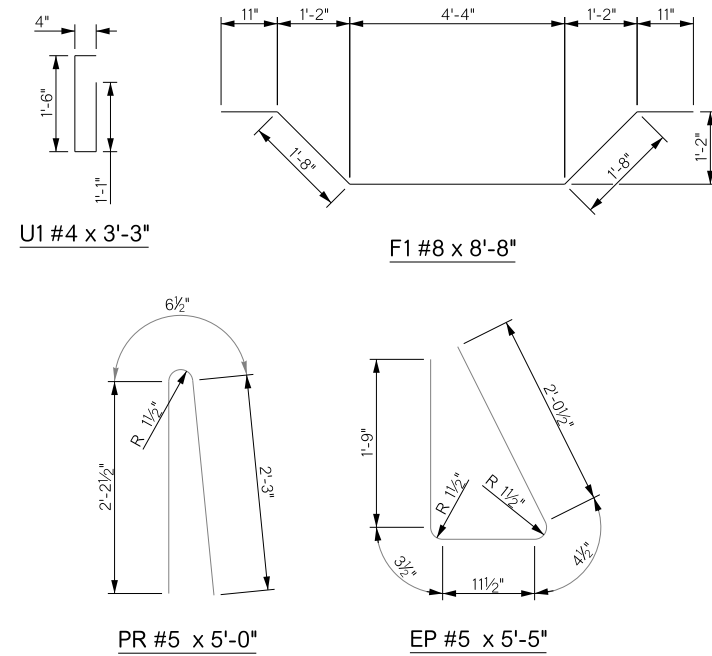
ITEM	UNIT	TOTAL
SEALED EXPANSION JOINT	L.F.	70.00
MECHANICAL SPLICES	EA.	14.00
STRUCTURAL STEEL	LB.	98.00
CLASS AA CONCRETE	C.Y.	11.60
EPOXY COATED REINFORCING STEEL	LB.	2,020.00
SEALER CRACK PREPARATION	L.F.	106.00
SEALER RESIN	GAL.	0.70



END DIAPHRAGM



SECTION B-B



BRIDGE 'C' & 'D' 1-44 OVER ARK. RIVER & ELWOOD AVE.		TULSA COUNTY		Design	N/A	N/A
DETAILS OF JOINT REPAIR (BRIDGE C & D)				Detail	ADG	06/16
				Check	KMS	07/16
STATE OF OKLAHOMA				Squad		
DEPARTMENT OF TRANSPORTATION				Engr:		
JOBPIECE NO. 31944(04)				SHEET NO.		B013